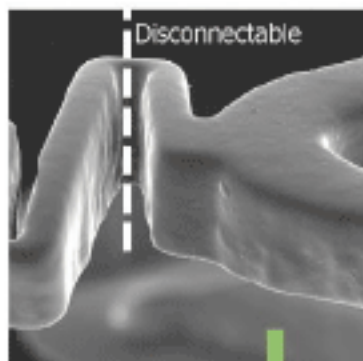
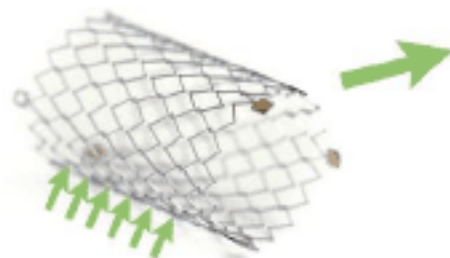


Stentys technology : disconnectable struts

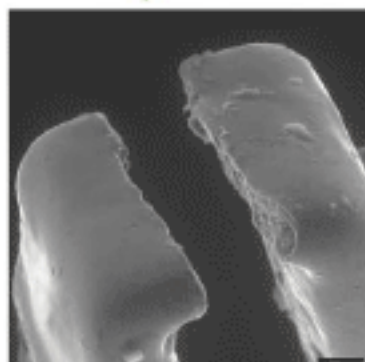
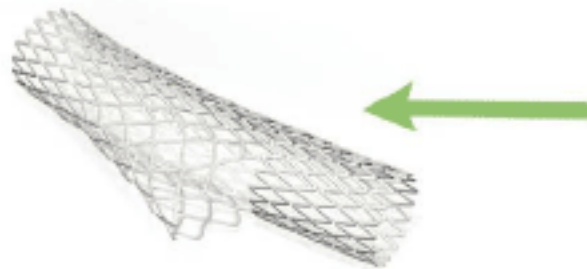
The stent can be opened at any level : the initial positioning is irrelevant to procedure success.



Close-up view of a closed connector from a Scanning Electron Microscope.

Such connectors are positioned at every level of the stent (every 1.2 mm).

The location of the disconnection is selected after the initial implantation to ensure a best fit with the anatomy.



Close-up view of an open connector from a Scanning Electron Microscope.

20 μ m